

# Public Opinion Snapshot:

## Farrowing Crates and Animal Welfare in Aotearoa

---

Findings from a nationally representative survey of 1,000 New Zealanders conducted by Verian, September 2025.



### Contact

Jessica Chambers  
Head of Campaigns  
[jessica@safe.org.nz](mailto:jessica@safe.org.nz)

Verian New Zealand  
Level 9, 101 Lambton Quay, Wellington  
[veriangroup.com/en-nz](https://veriangroup.com/en-nz)

# Contents

Research methodology..... 2

Key findings on the use of Farrowing Crates ..... 2

General attitudes and perceptions of Animal Welfare ..... 3

Perceptions of New Zealand’s Animal Welfare Systems ..... 4

Upholding the animal welfare act..... 5

Factory Farming ..... 6

Animal welfare and political leaning ..... 7

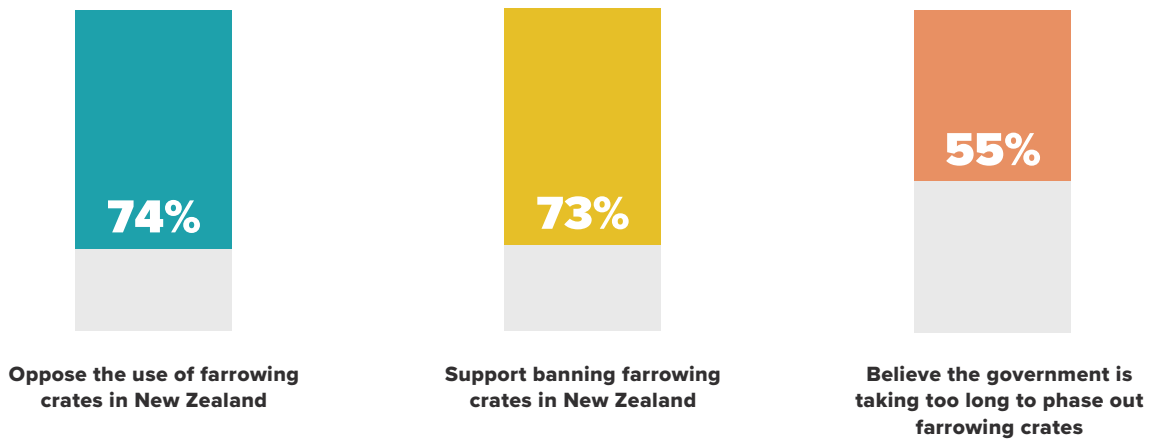
## Research methodology

Online panel survey of 1,000 New Zealanders aged 18 and over. Fieldwork took place between 3 to 21 September 2025, conducted by Verian.

Results are post-weighted to be representative of the population by region, age by gender, and ethnicity.

## Key findings on the use of farrowing crates

Three in four New Zealanders oppose the use of farrowing crates and support banning their use in New Zealand. More than half of New Zealanders feel the government is taking too long phasing out the crates.



**Source:** PF2. Do you support or oppose the use of farrowing crates in New Zealand? PF3. Do you support or oppose the Government banning the use of farrowing crates in New Zealand? PF4. What do you think about the length of time the Government is taking before it phases out farrowing crates following the 2020 High Court Ruling?

**Base:** All New Zealanders (n=1,000).

## General attitudes and perceptions of animal welfare

Almost all New Zealanders think it's important to protect animals from cruelty and neglect, and believe the term 'animal cruelty' includes both physical and mental harm. Only a third trust the farming sector to prioritise animal welfare.

98%

Believe it's important to protect animals from cruelty and neglect

92%

Believe the term 'animal cruelty' should cover both physical and mental pain/suffering

91%

Believe all animals can suffer from animal cruelty and welfare issues

78%

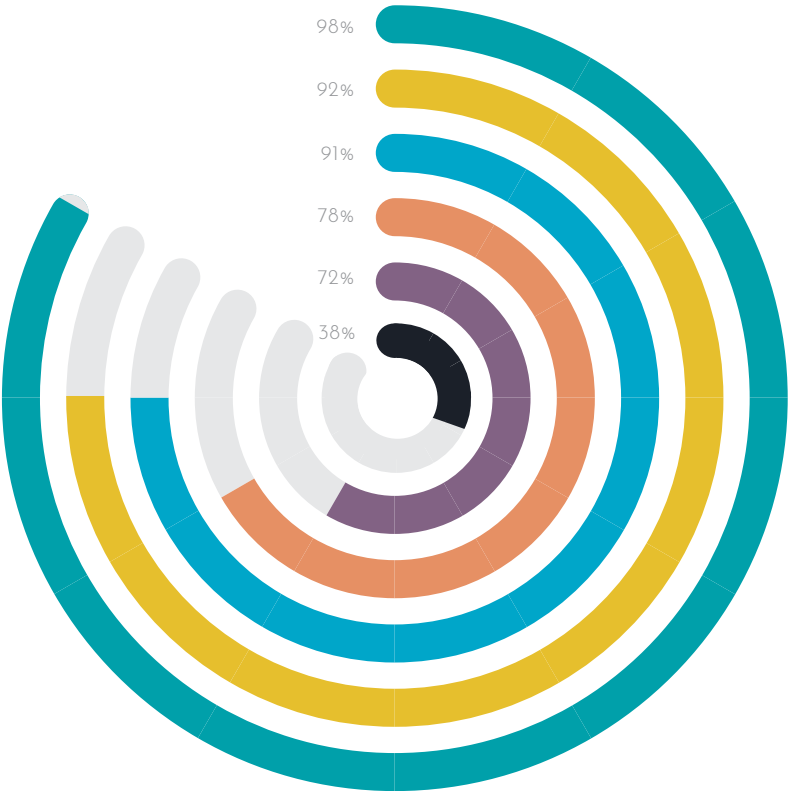
Concerned farmed animals experience suffering due to poor living conditions/lack of proper care

72%

Believe animals should be given well above the minimum physical standards and mental enrichment to live

38%

Trust the farming sector to prioritise animal welfare

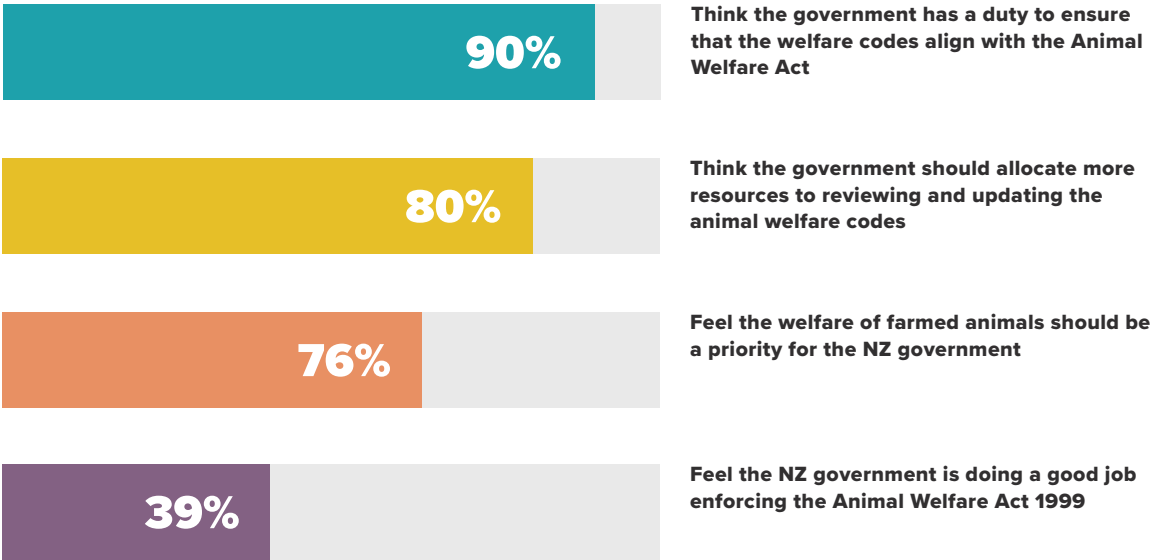


**Source:** GA1. How important or unimportant do you think it is to protect animals from cruelty and neglect? DA1A. And in your opinion should the term 'animal cruelty' cover... DA3. What animals do you believe can suffer from animal cruelty and welfare issues? GA4. How concerned or unconcerned are you that animals in the farming sector experience suffering due to poor living conditions or lack of proper care? DA2. Animal welfare standards are guidelines on how animals are treated. Which of the following best describes what you believe SHOULD be given to animals under animal welfare standards in New Zealand? GA5. How much do you trust or distrust the farming sector to prioritise animal welfare?

**Base:** All New Zealanders (n=1,000).

## Perceptions of New Zealand’s animal welfare systems

Most New Zealanders believe government has a duty to ensure that Codes of Welfare align with the Animal Welfare Act 1999 and should be allocating more resources to reviewing and updating the codes. Three quarters of New Zealanders believe the welfare of farmed animals should be a priority for the government, while just a third believe the government is doing a good job enforcing the Animal Welfare Act.

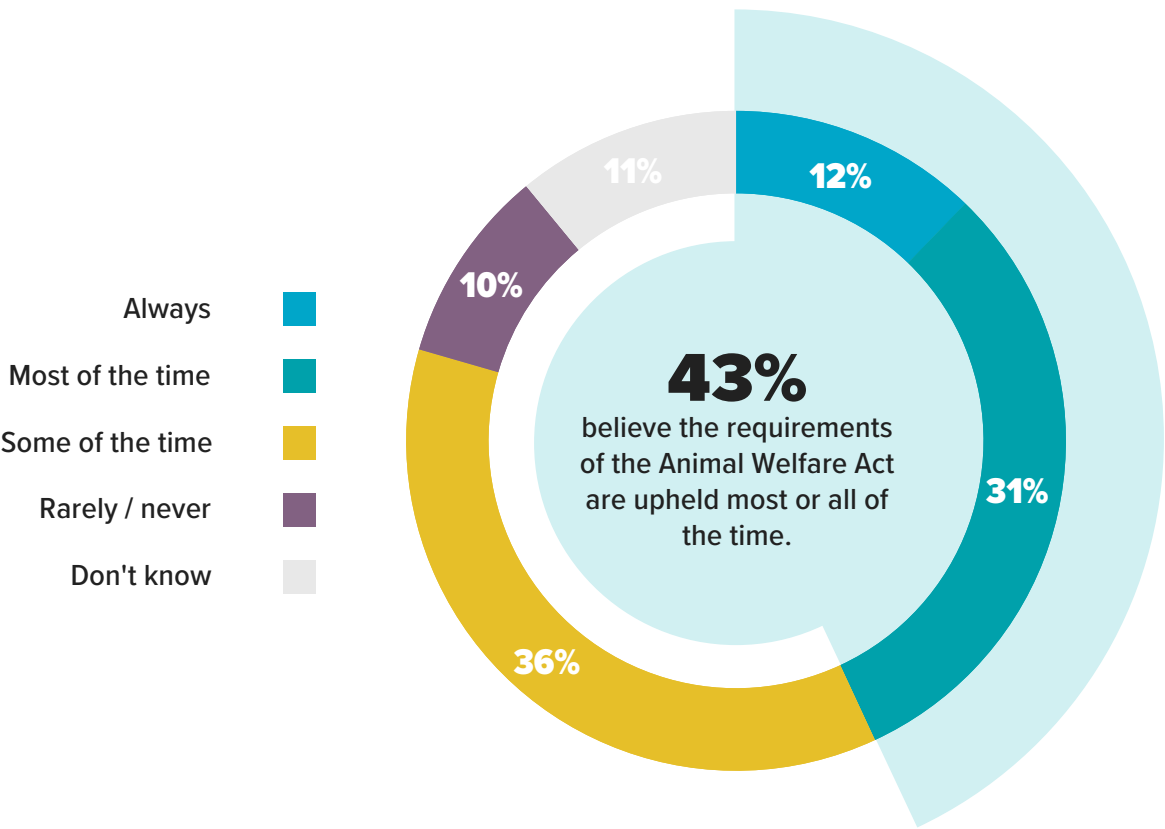


**Source:** AW7. Do you think the government has a duty to ensure that the welfare codes align with the Animal Welfare Act? AW9. Do you think the government should allocate more resources to reviewing and updating animal welfare codes? GA6. To what extent do you agree or disagree with the following statement: the welfare of farmed animals should be a priority for the New Zealand government? AW6. Do you think the NZ government is doing a good or poor job enforcing the Animal Welfare Act 1999?

**Base:** All New Zealanders (n=1,000).

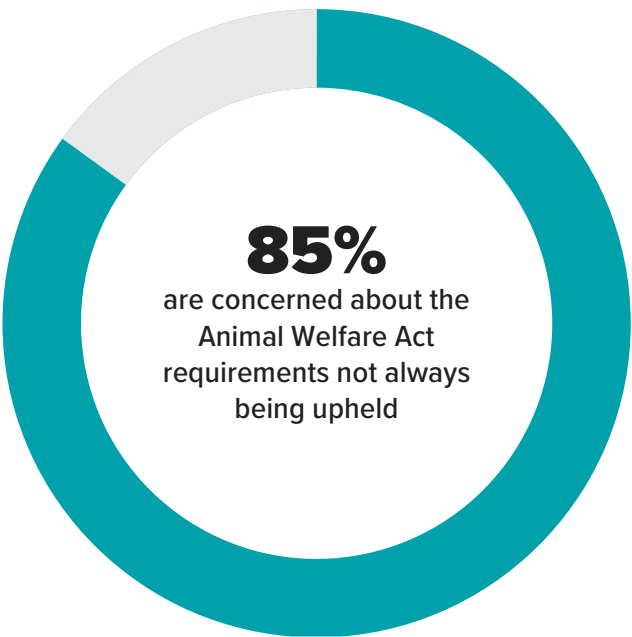
## Upholding the Animal Welfare Act

A minority of New Zealanders (43%) believe the requirements of the Animal Welfare Act are upheld most or all of the time.



**Source:** AW2. Which of the following describes how often you believe the requirements of the Animal Welfare Act are upheld in New Zealand?

**Base:** All New Zealanders (n=1,000).



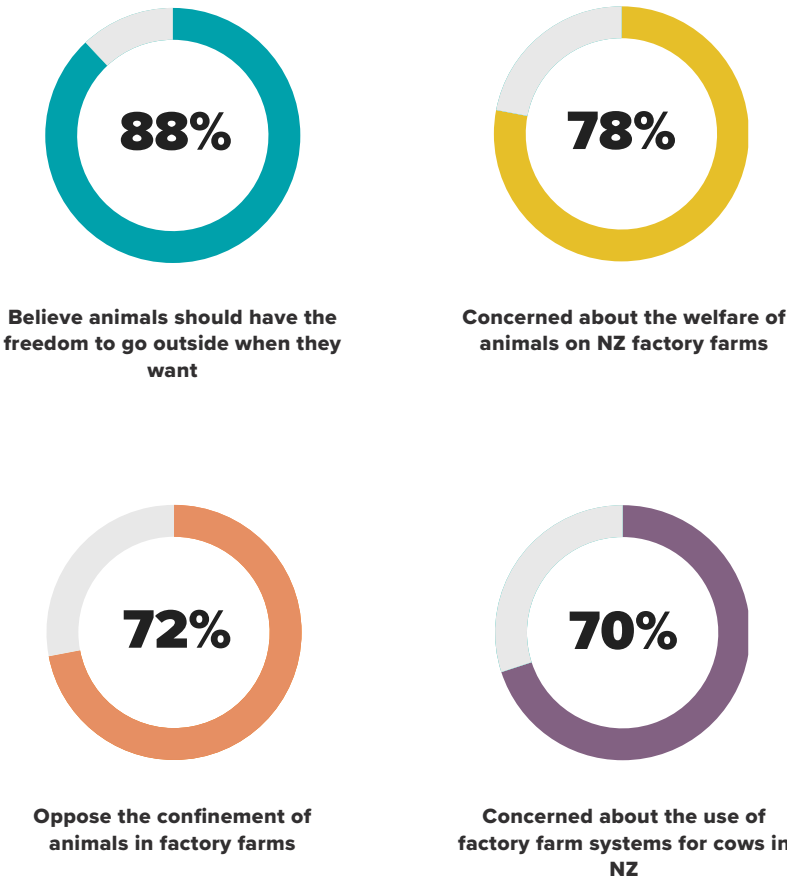
Among those who feel the requirements are not always upheld, **most are concerned about it.**

**Source:** AW5. How concerned, if at all, are you that requirements under the Animal Welfare Act are not always upheld?

**Base:** Those who believe the requirements of the animal Welfare Act are not always upheld (n=806).

## Factory Farming

New Zealanders are widely concerned about the welfare of animals on factory farms in Aotearoa. Eighty-eight percent of New Zealanders think animals should be able to go outside when they want.



**Source:** FF4. To what extent do you agree or disagree with this statement: Animals should have the freedom to go outside when they want. FF2. How concerned or not concerned are you about the welfare of animals on New Zealand factory farms? FF3. Do you support or oppose the confinement of animals in factory farms? FF5. Thinking specifically about cows now. How concerned or not concerned are you about the use of factory farm systems (e.g., barns or feedlots) for cows in New Zealand.

**Base:** All New Zealanders (n=1,000).

**Six in ten New Zealanders would support a ban on all factory farming systems.**



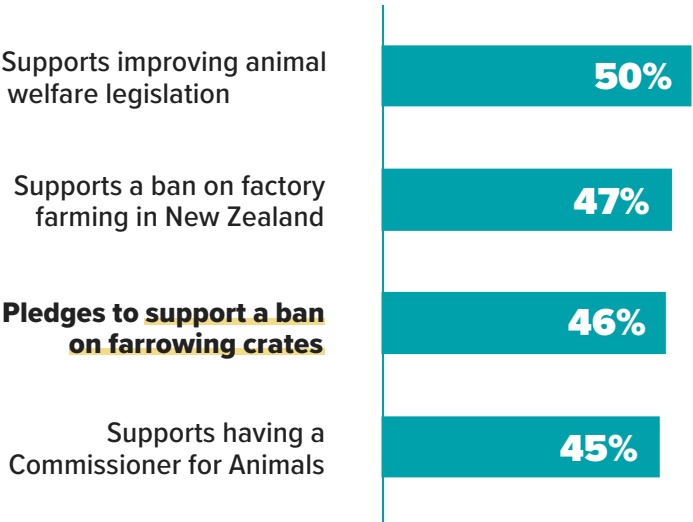
**Source:** FF6. Would you support or oppose a ban on all factory farming systems in New Zealand?

**Base:** All New Zealanders (n=1,000).

## Animal welfare and political leaning

**Half of New Zealanders** say they are more likely to vote for a political party which supports animal welfare.

**More likely to vote for a political party if the party...**



**Source:** GA7.If a political party supported improving animal welfare legislation, how would that impact your likelihood of voting for them? FF7. If a political party supported a ban on factory farming in New Zealand, would you be more or less likely to vote for them? PF9.If a political party pledged to support a ban on farrowing crates, would you be more or less likely to vote for them? EC5. If a political party supported having a Commissioner for Animals, would you be more or less likely to vote for them?

**Base:** All New Zealanders (n=1,000).